

HB-4G18G-180-S is a 180 degree hybrids Coupler , designed to operate over the 4 to 18 GHz frequency range, with compact size.

Main Features:

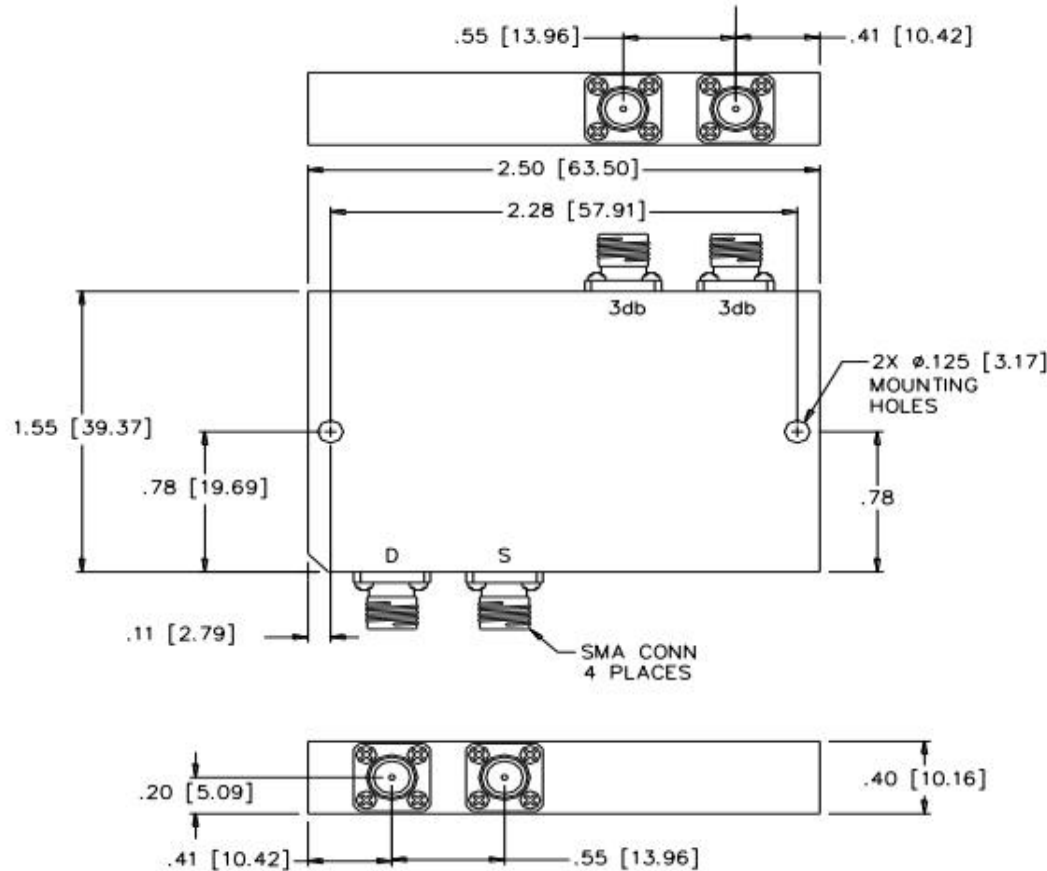
Low insertion loss of 1.2dB max;

High isolation of 16dB min;

Designed to handle 20W max;

Low VSWR of 1.6 max

Mechanical Outline(Inch/mm):




Specifications:

Frequency:	4 to 18 GHz
Insertion loss:	1.2dB max
Isolation:	16dB min
Amplitude balance:	0.6dB max
Phase balance:	10deg max
Power Handling:	20W max
VSWR:	1.60:1 max
Connectors:	SMA Female

Environmental Ratings:

Temperature:	-25°C to +71 °C Operating -65 °C to +100 °C Non-Operating
Vibration:	MIL-STD-202F, Method 204D Cond. B
Altitude:	MIL-STD-202F, Method 105C Cond. B
Temperature Cycle:	MIL-STD-202F, Method 107D Cond. A

180 Degree Hybrid Couplers HB-4G18G-180-S			
DRAWN:	DWG NO.:	REV CODE: Rev.1.0	 www.connphy.com sales@connphy.com
CHECKRD:	DATE: 02/09/15	SHEET : 1 OF 1	
ISSUED:	SIZE: A	SCALE : N / A	
			Notes: SPEC ARE SUBJECT TO CHANGE WITHOUT NOTICE.