

**HB-2G8G-180-S** is a 180 degree hybrids Coupler , designed to operate over the 2 to 8 GHz frequency range, with compact size.

**Main Features:**

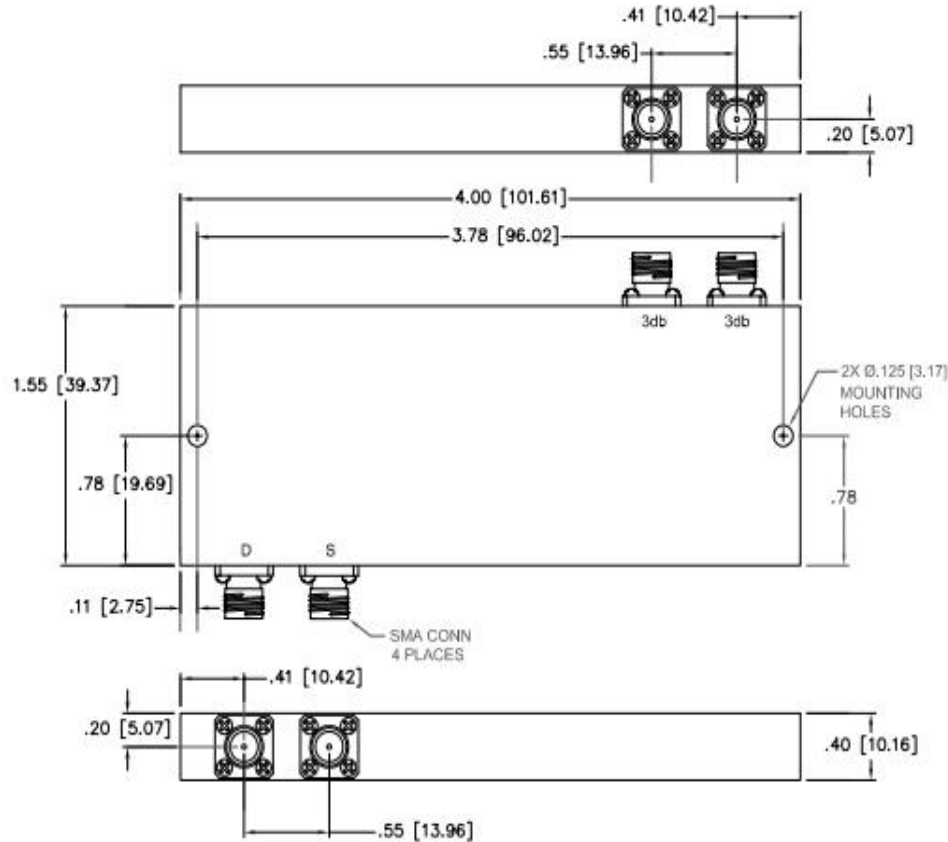
Low insertion loss of 1.0dB max;

High isolation of 18dB min;

Designed to handle 20W max;

Low VSWR of 1.4 max

**Mechanical Outline(Inch/mm):**




**Specifications:**

Frequency:	2 to 8 GHz
Insertion loss:	1.0dB max
Isolation:	18dB min
Amplitude balance:	0.6dB max
Phase balance:	8deg max
Power Handling:	20W max
VSWR:	1.40:1 max
Connectors:	SMA Female

**Environmental Ratings:**

Temperature:	-25°C to +71 °C Operating -65 °C to +100 °C Non-Operating
Vibration:	MIL-STD-202F, Method 204D Cond. B
Altitude:	MIL-STD-202F, Method 105C Cond. B
Temperature Cycle:	MIL-STD-202F, Method 107D Cond. A

180 Degree Hybrid Couplers HB-2G8G-180-S			
DRAWN:	DWG NO.:	REV CODE: Rev.1.0	 <a href="http://www.connphy.com">www.connphy.com</a> <a href="mailto:sales@connphy.com">sales@connphy.com</a>
CHECKRD:	DATE: 02/09/15	SHEET : 1 OF 1	
ISSUED:	SIZE: A	SCALE : N / A	Notes: SPEC ARE SUBJECT TO CHANGE WITHOUT NOTICE.